



Parks

# 79th Street Boat Basin

Located at West 79th Street and the Hudson River  
in the Borough of Manhattan

Manhattan Community Board 7  
Parks & Environment Committee  
June 21, 2021

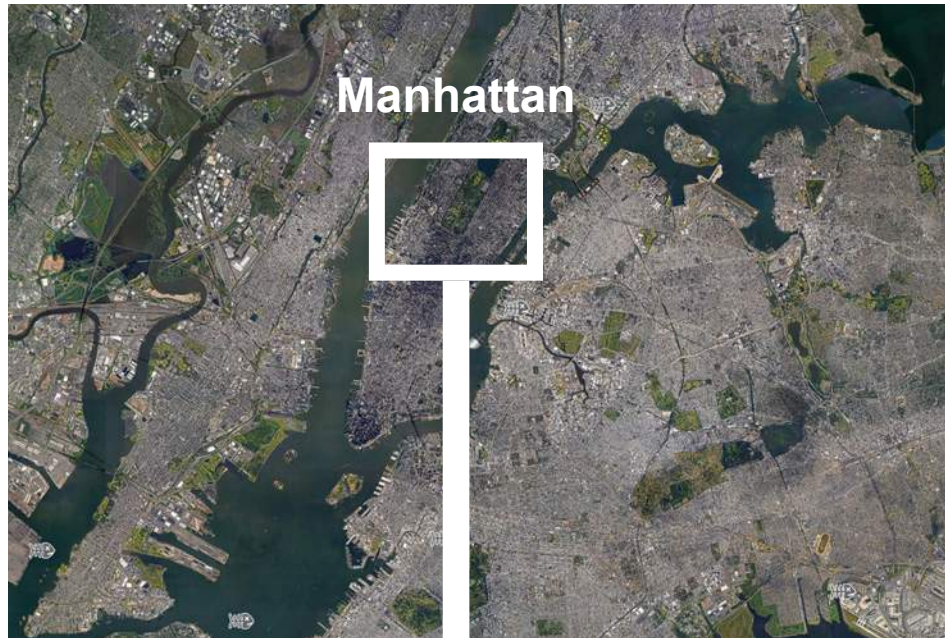
**Total Budget:** \$89.2m (\$60.9m Mayoral / \$28.3m FEMA)  
**Construction Budget:** \$62.0m

**Project Size:** 15.00 ac (In-Water Portion)

# Goals

- Reconstruct the marina to meet current climate resiliency design guidelines
- Enhance navigability of the basin via increased water depths and restored debris/ice protection
- Deliver utilities, accessibility, safety and security that comply with modern codes and standards
- Expand the number of boating berths to address the 850+ person, 15-year waiting list
- Upgrade the Dockhouse to comply with full expanded facility program





Manhattan

City

2 MI



Upper West Side

Neighborhood

1000 FT



Site

Site

200 FT



NYC Parks



**Manhattan Community Board 7**  
**79th Street Boat Basin | Project Location**

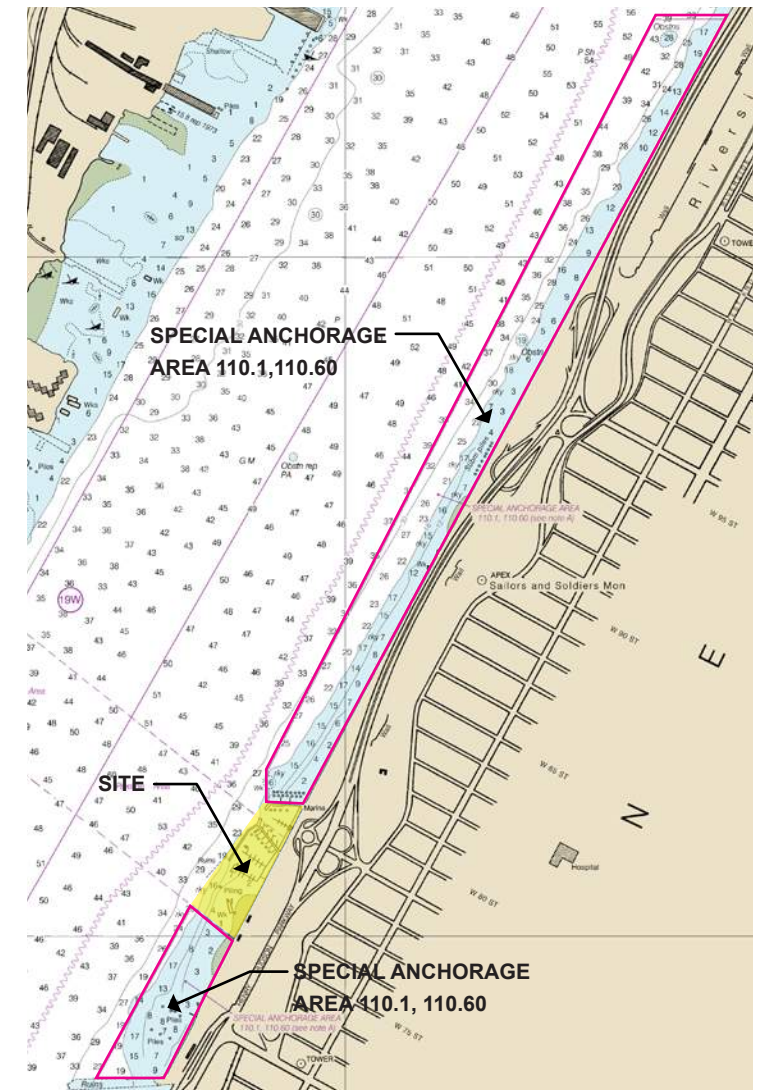




Mooring Area

1500 FT

NYCDPR dedicated mooring area (105.6 acres) denoted as “Special Anchorage Area” in the Federal Register Vol. 78, No. 161, Section 110.60



NOAA Chart 12341



NYC / EDC  
 ETHAYER ASSOCIATES  
 m&n engineering, p.c.

**Manhattan Community Board 7**  
**79th Street Boat Basin | Project Location with Mooring Area**





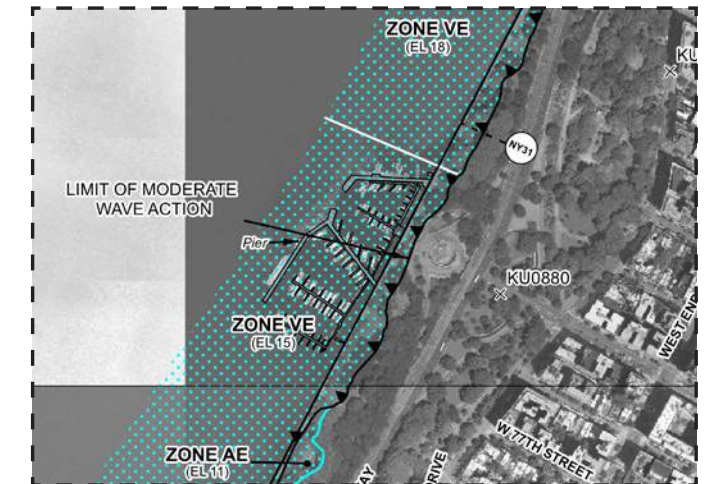
## Flood Hazard Zones

### 2015 Preliminary 100-year Floodplain

1% Annual Chance Floodplain (100 Year Floodplain) The area that has a 1% chance of flooding in any given year.

### 2050s Projected 100-year Floodplain

The potential areas that could be impacted by the 100-Year flood in the 2050s based on projections of the high-estimate 90th percentile sea level rise scenario (NYC Panel on Climate Change (NPCC) 2015 data).



### FEMA FIRM Map

Preliminary 2013 - FEMA FIRM Map:  
3604970086G  
Zone VE (EL 15)  
Moderate wave action

2007 - FEMA FIRM Map: 3604970086F  
Zone AE (EL 10)  
Moderate wave action (not indicated)



NYC Parks



## Manhattan Community Board 7 79th Street Boat Basin | Flood Risk





## Land Use Categories

- 1 And 2 Family Residential
- Multi-Family Residential
- Mixed Use
- Open Space And Outdoor Recreation
- Commercial
- Institutional
- Industrial
- Parking
- Transportation / Utilities



NYC Parks

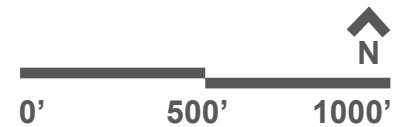


## Manhattan Community Board 7 79th Street Boat Basin | Surrounding Land Use





**Manhattan Community Board 7**  
**79th Street Boat Basin | Neighborhood Context**



1920 1930 1940 1950 1960 1970 1980 1990 2000 2010 2020

Approx. 1936

Approx. 1968

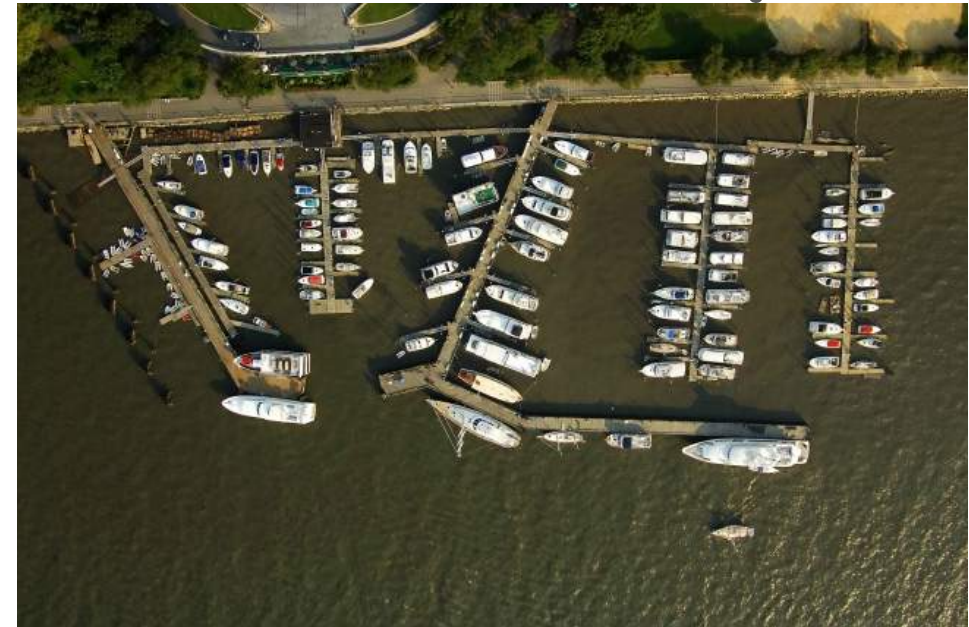
Approx. 2015



Original Construction



Southern Expansion

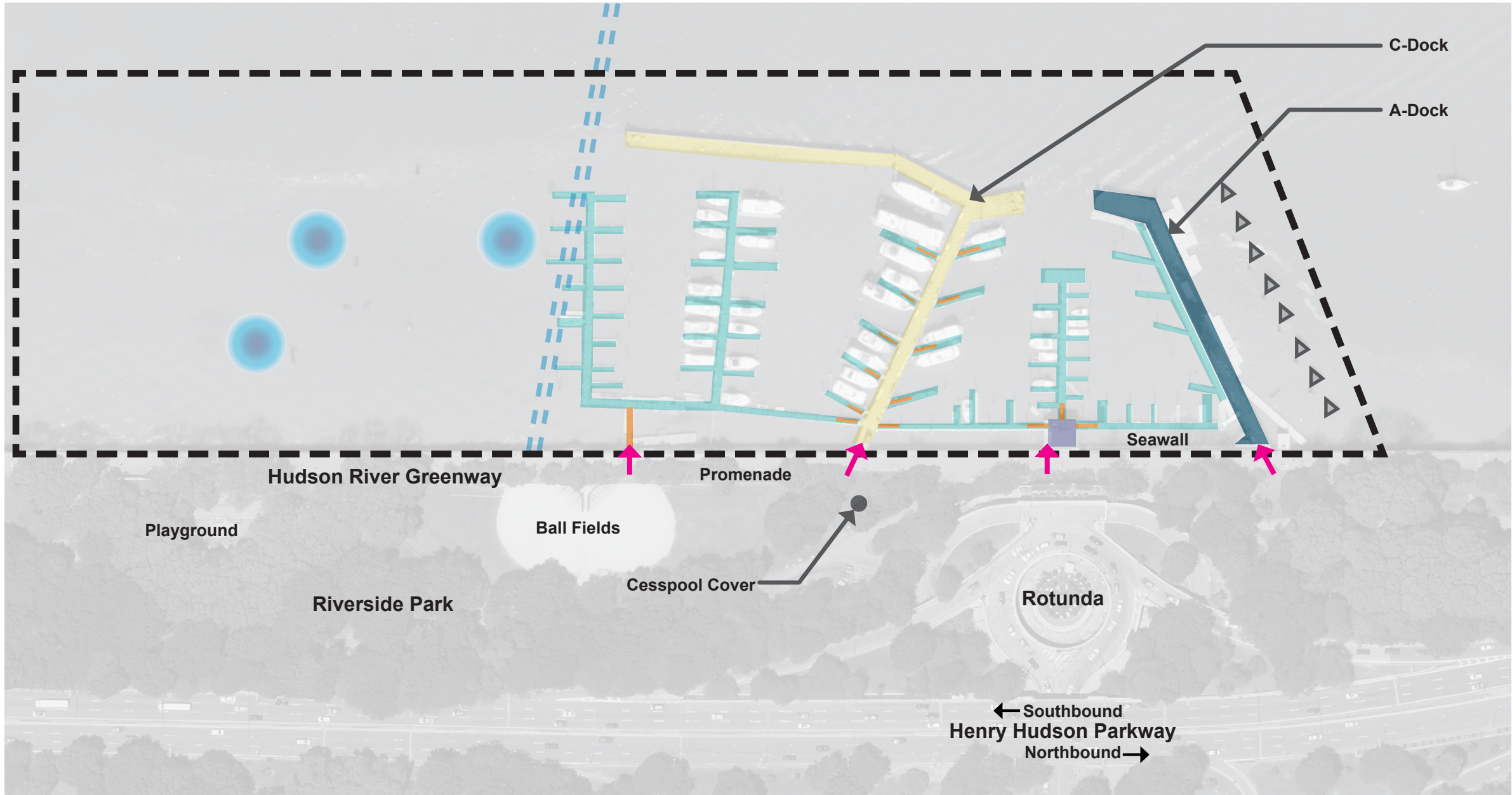


Current Configuration



Manhattan Community Board 7  
79th Street Boat Basin | Historical Context





### Legend

- Project Limit
- Pedestrian Entrance
- Damaged Fixed Pier
- Damaged Floating Docks
- Rebuilt Fixed Pier (2016)
- Damaged Gangway
- Damaged Dockhouse
- Debris Field
- Existing Icebreaker
- Existing Gas Pipeline
- Vehicular Traffic



NYC Parks



## Manhattan Community Board 7 79th Street Boat Basin | Existing Layout and Site Analysis

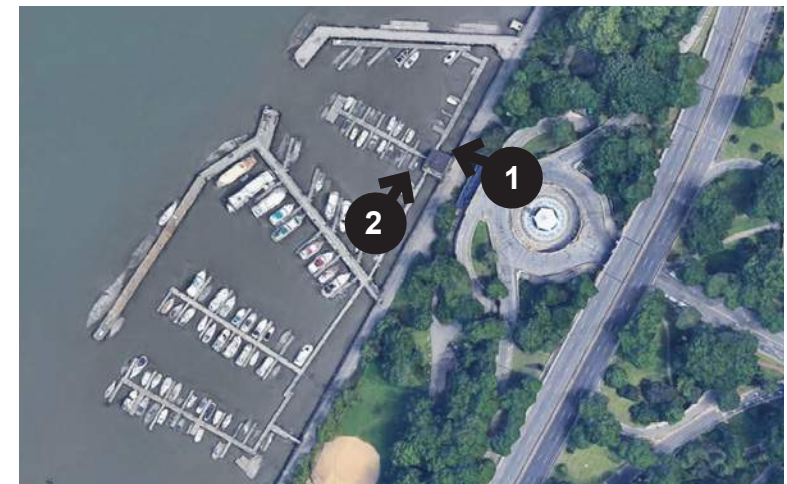




1 - View from Café Looking West



2 - View from Floating Dock Looking North

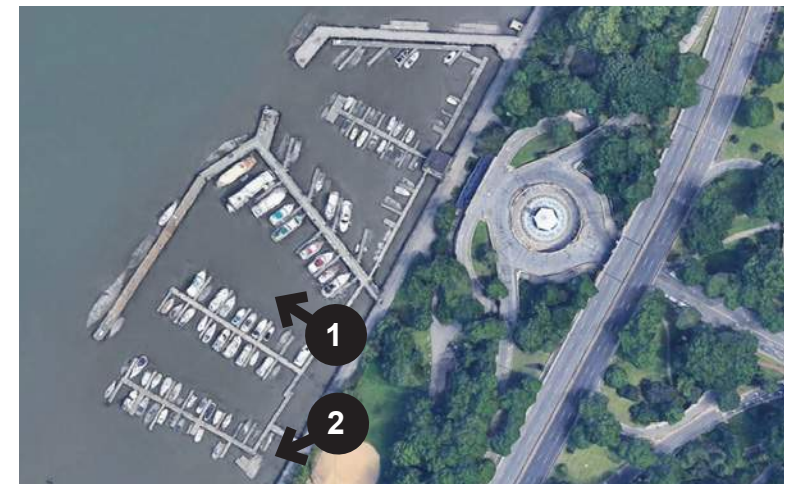




1 - View Looking West at Wave Screen



2 - View from Promenade Looking Southwest





1 - C-Dock at Low Tide

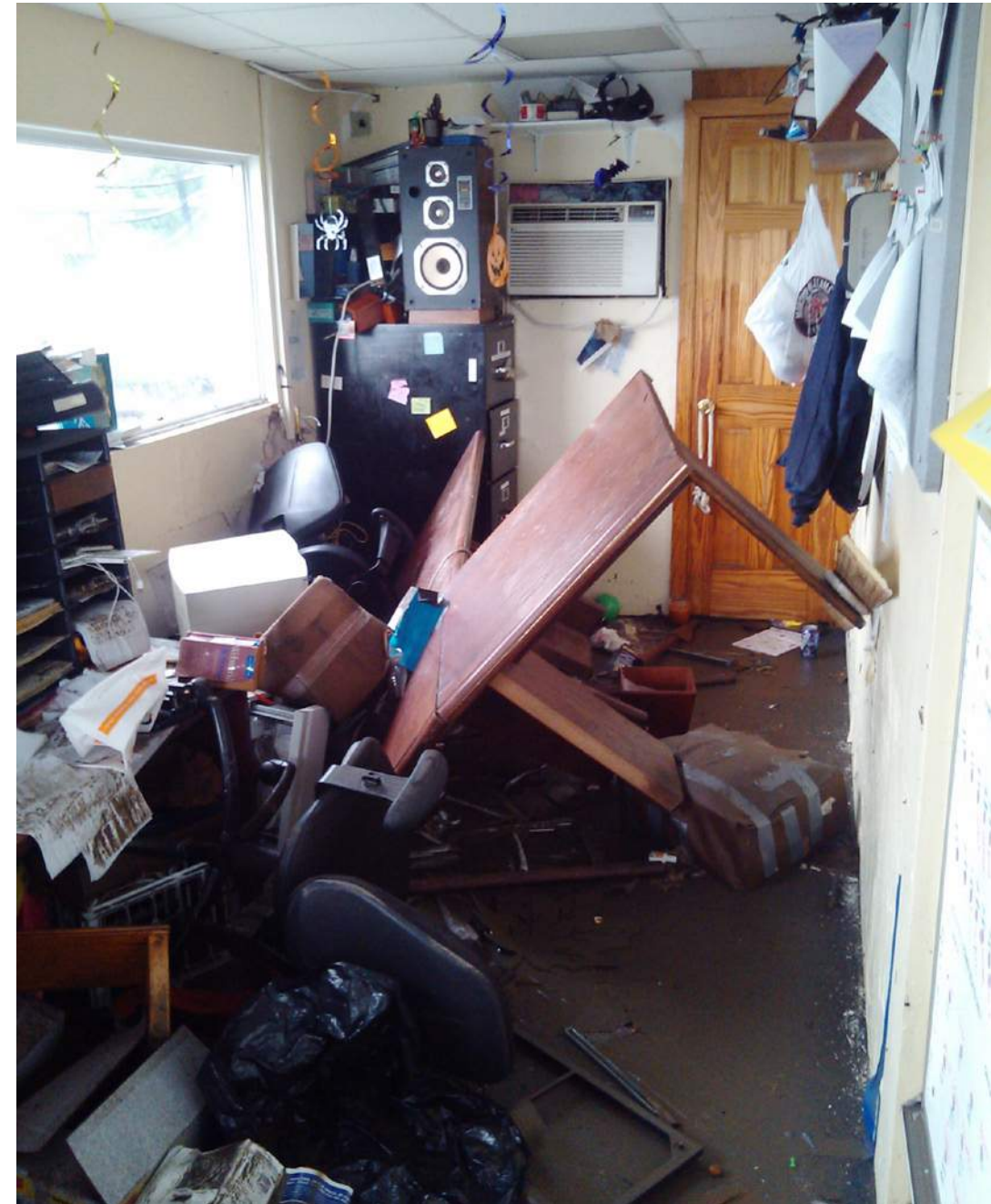


2 - D-Dock Ice Damage





Dock & Gangway Damage



Dockhouse Office After Flood



NYC Parks



**Manhattan Community Board 7**  
**79th Street Boat Basin | Hurricane Sandy Damage**

## Stakeholder Outreach:

- 79th Street Boat Basin Boaters
- Riverside Park Conservancy
- Community Board 7
- Borough President Gale Brewer
- Council Member Helen Rosenthal
- Assembly Member Linda Rosenthal
- State Senator Robert Jackson
- Congressional District Staff, Rep. Jerry Nadler
- NYPD 20th Precinct
- NYPD Harbor Patrol
- FDNY Marine Unit
- U.S. Coast Guard Waterways Management
- Dedicated Email: [boatbasin@parks.nyc.gov](mailto:boatbasin@parks.nyc.gov)



Visioning Session with 79th Street Boat Basin Boaters 10/24/19

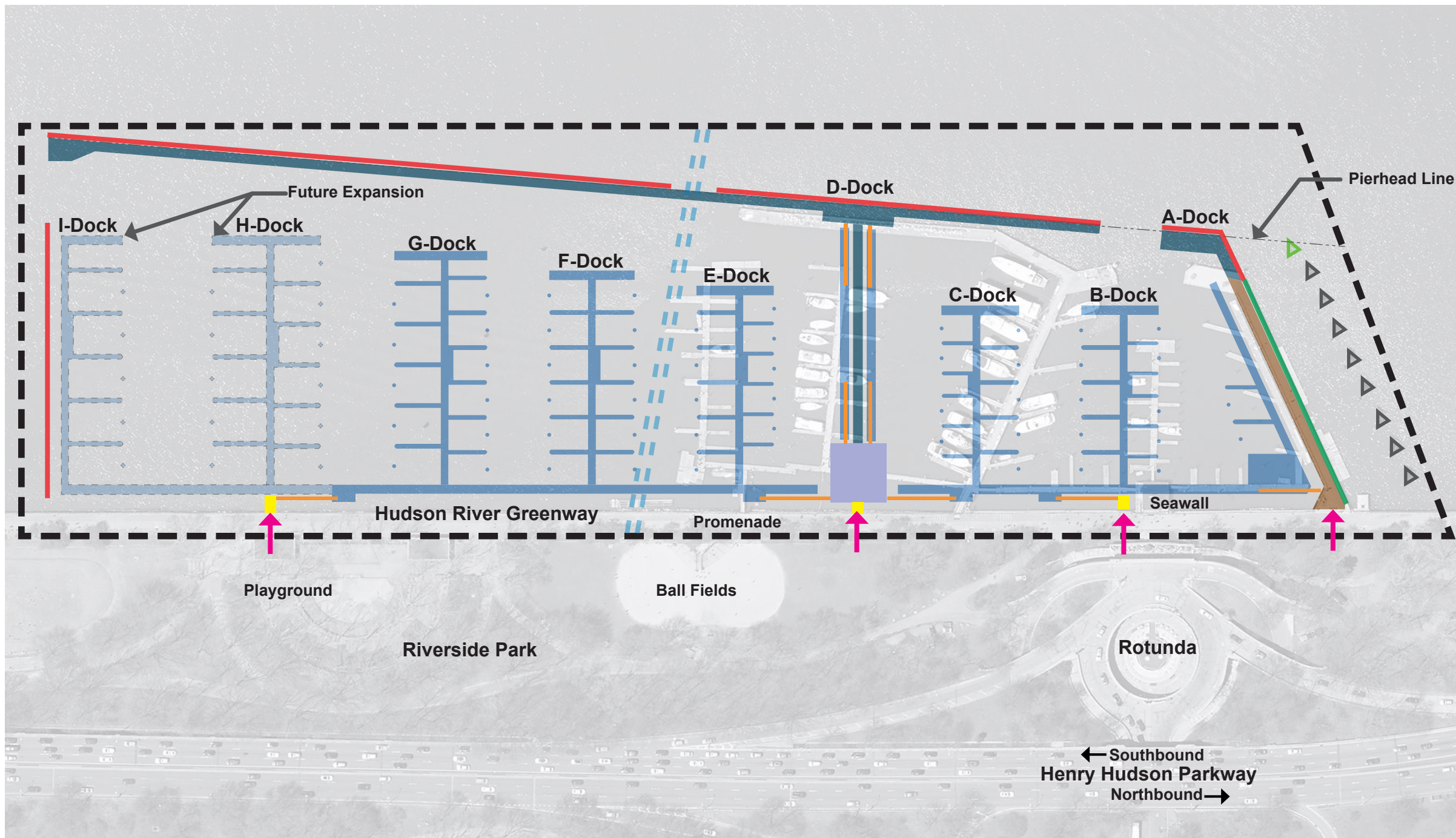


NYC Parks



**Manhattan Community Board 7**

**79th Street Boat Basin | Stakeholder Outreach**



## Legend

-  Project Limit
-  Pedestrian Entrance
-  Existing Fixed Pier to Remain
-  Existing Debris Screen to Remain
-  Fixed Pier
-  Wave Screen
-  Gas Line
-  Floating Docks (w/ Dash = Future)
-  Gangway
-  Elevated Dockhouse over Fixed Pier
-  Access Platform
-  New Icebreaker
-  Existing Icebreaker
-  Vehicular Traffic



NYC Parks

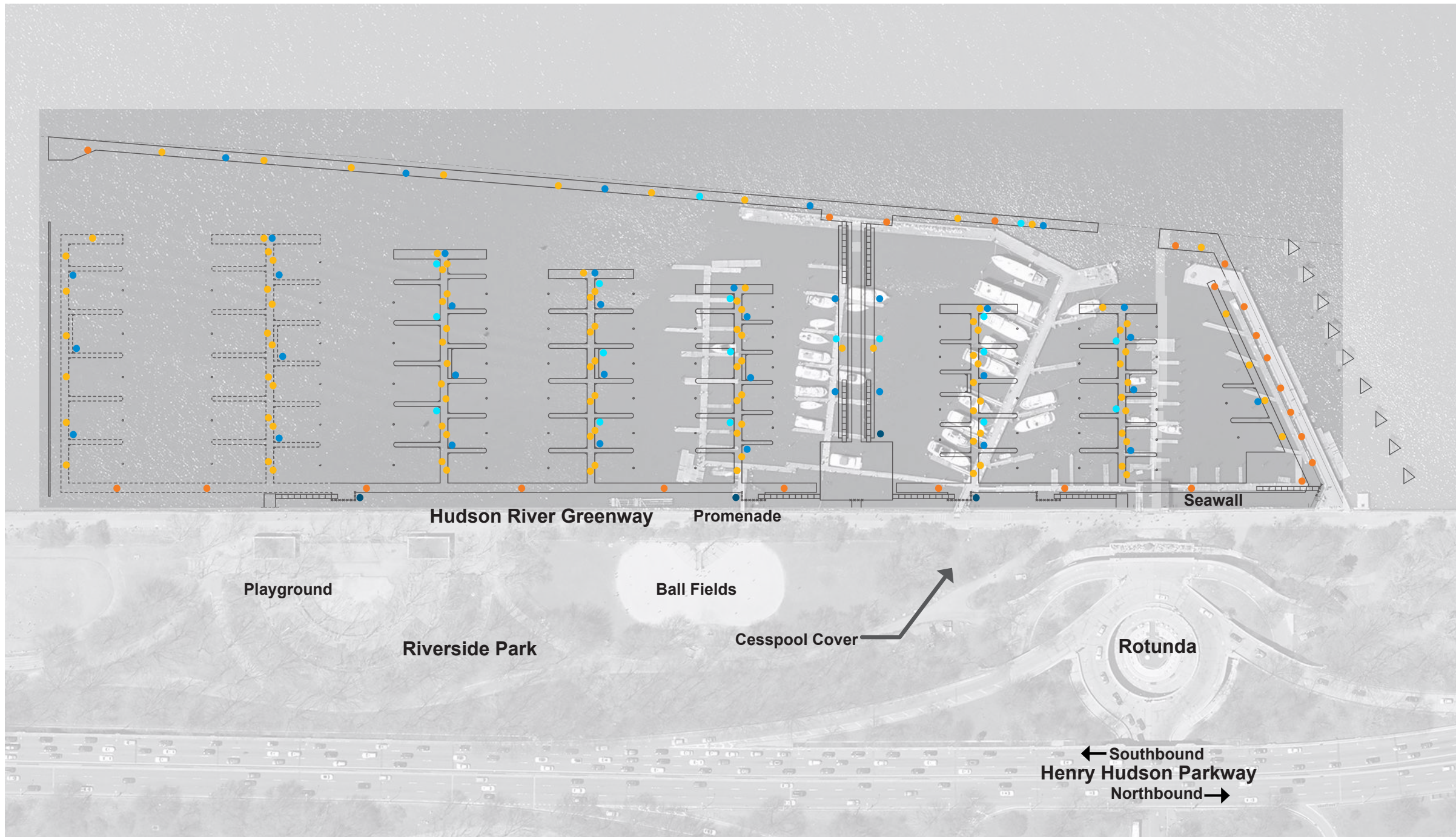


## Manhattan Community Board 7 79th Street Boat Basin | Preliminary Design Plan

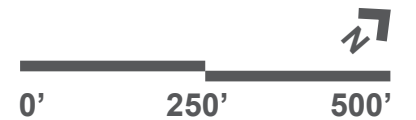


# Legend

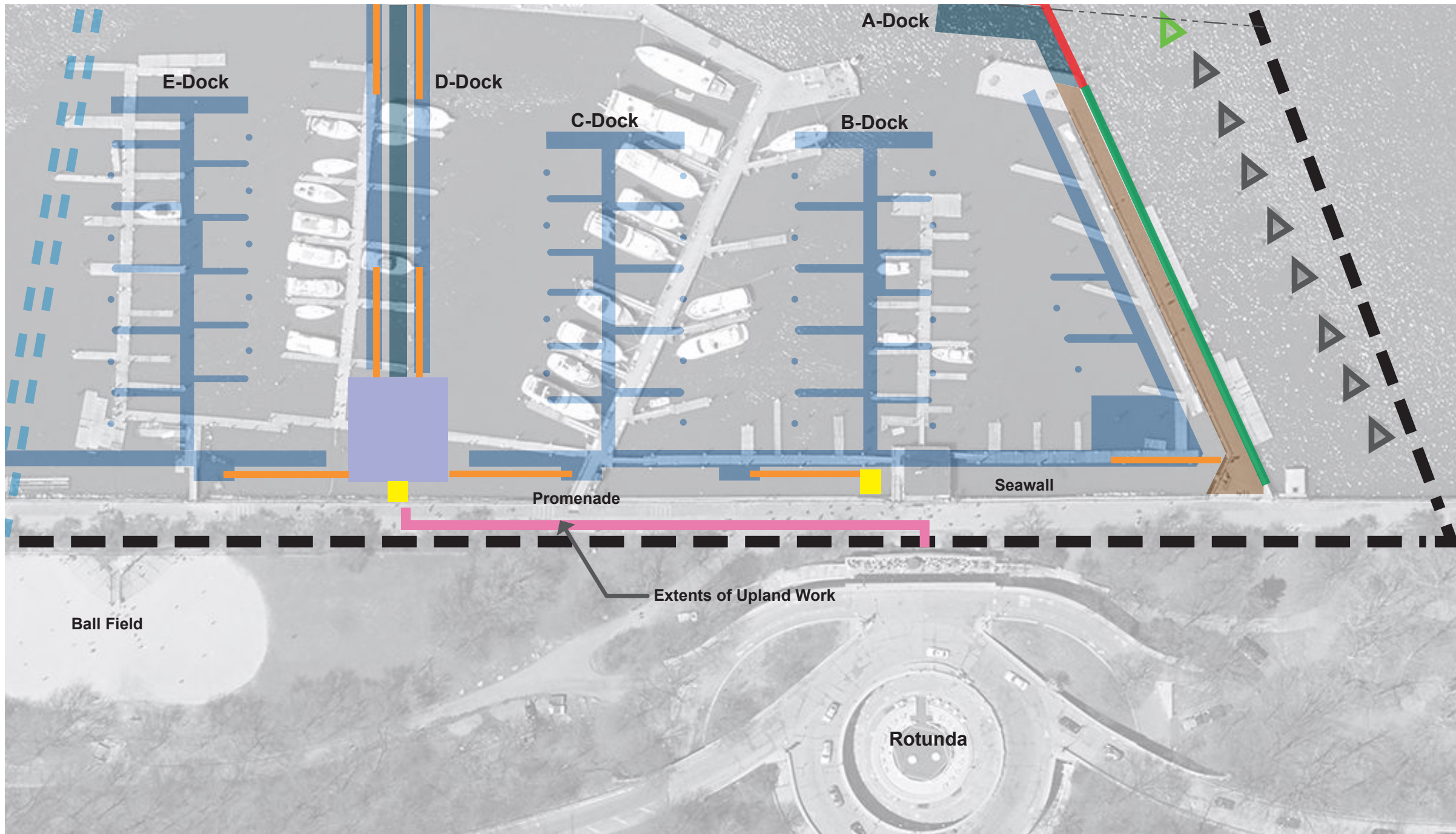
- Power Pedestal
- Light Bollard
- Winter Potable Water
- Pump-Out Unit
- Pump-Out Connection















## Manhattan Community Board 7 79th Street Boat Basin | Marina Utility Plan







### Legend

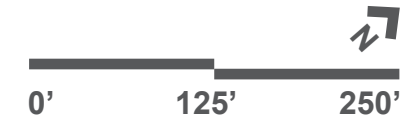
-  Project Limit
-  Existing Fixed Pier to Remain
-  Existing Debris Screen to Remain
-  Fixed Pier
-  Wave Screen
-  Gas Line
-  Floating Docks (w/ Dash = Future)
-  Gangway
-  Elevated Dockhouse over Fixed Pier
-  Access Platform
-  New Icebreaker
-  Existing Icebreaker
-  Extents of Upland Work



NYC Parks

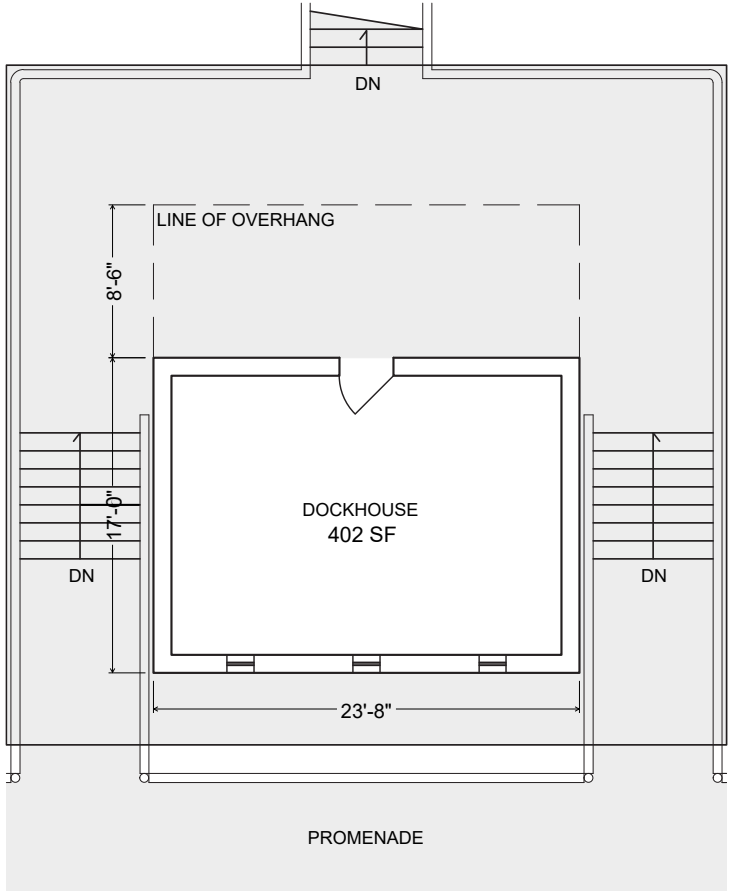


## Manhattan Community Board 7 79th Street Boat Basin | Limits of Upland Work

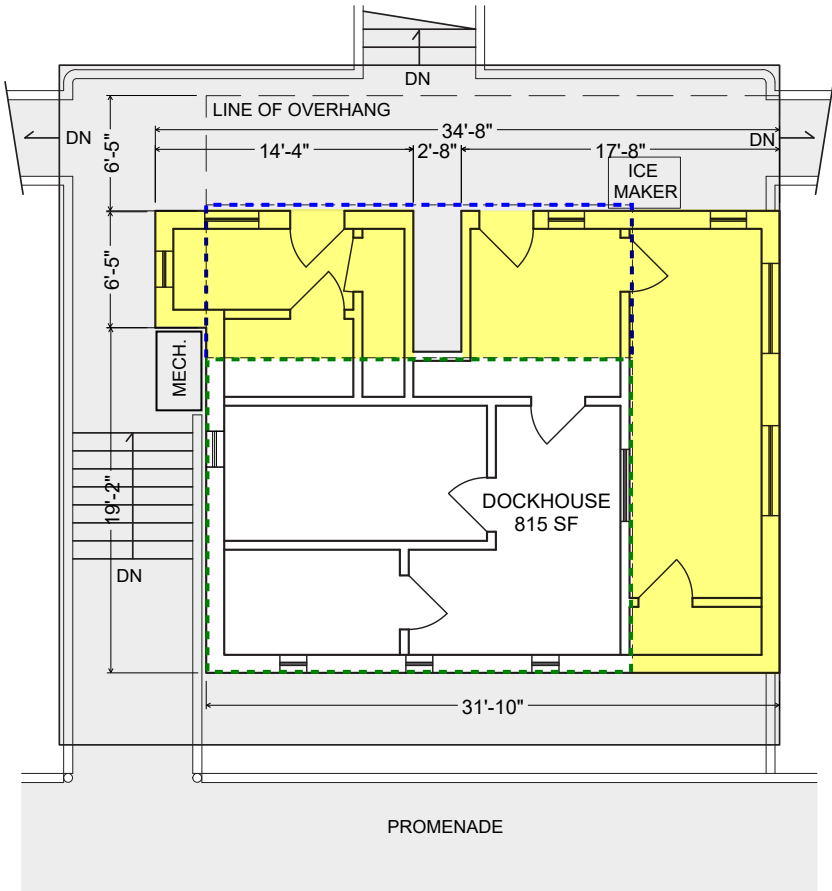


**Legend**

- 2003 Additions - 413 SF
- Outline of Original Overhang
- Outline of Original Dockhouse

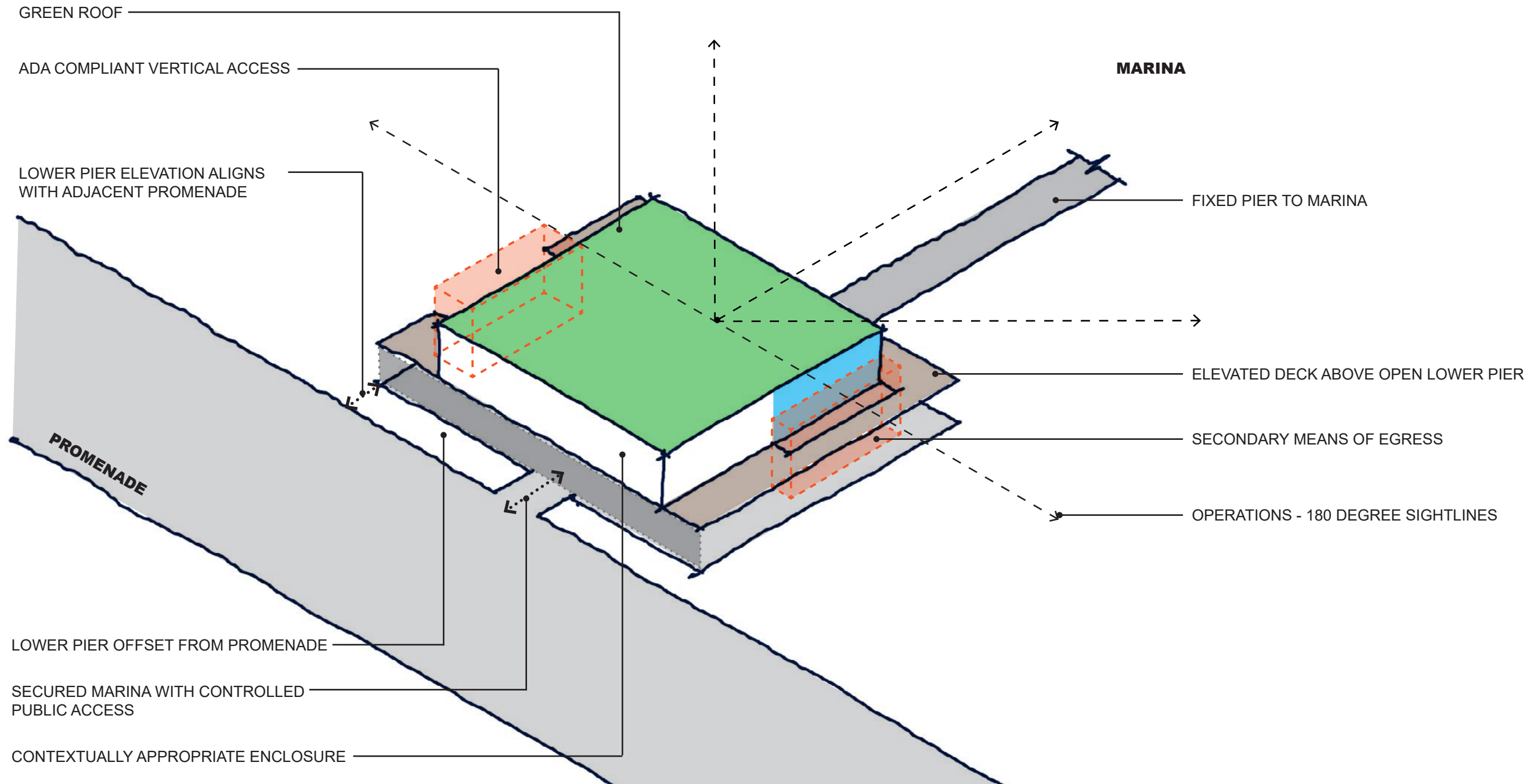


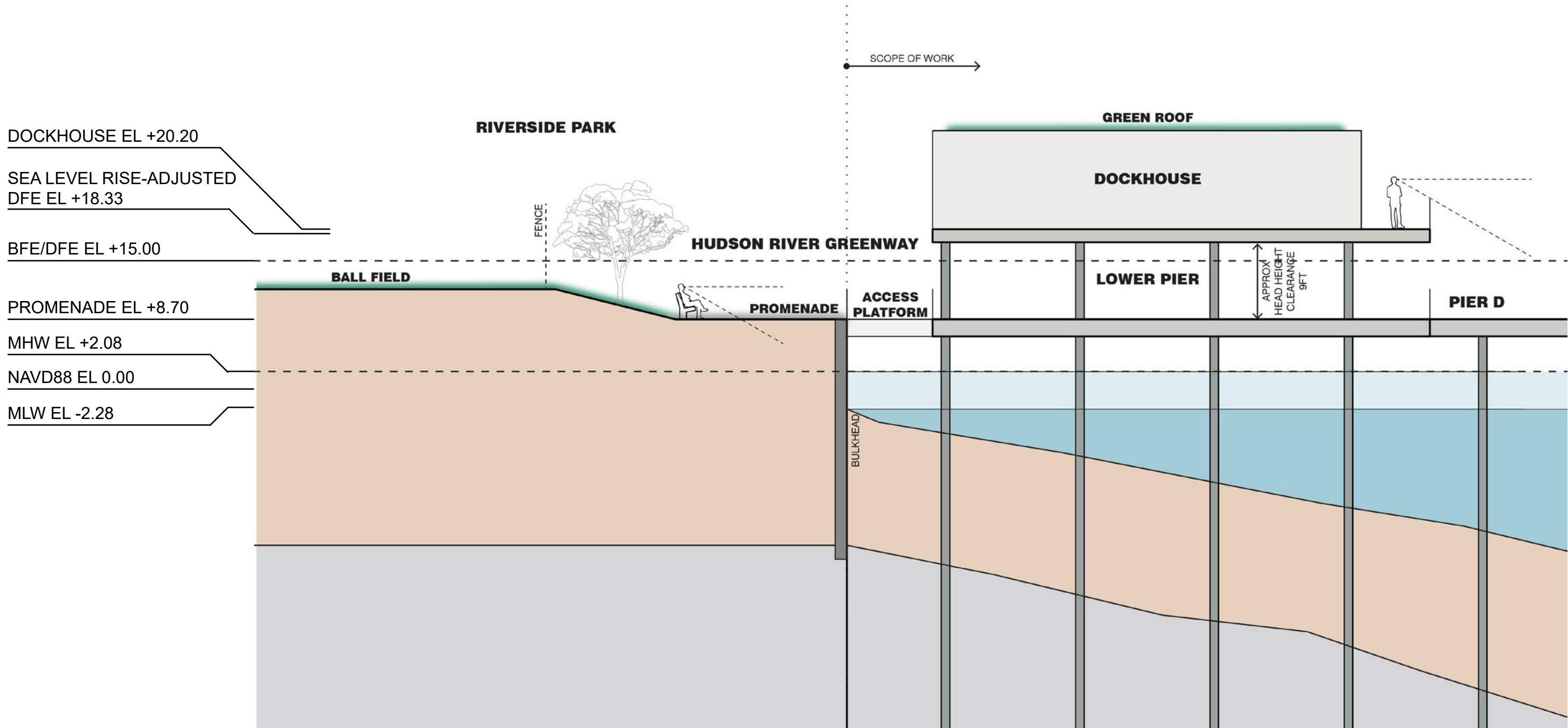
**Original 1937**



**Existing Layout**





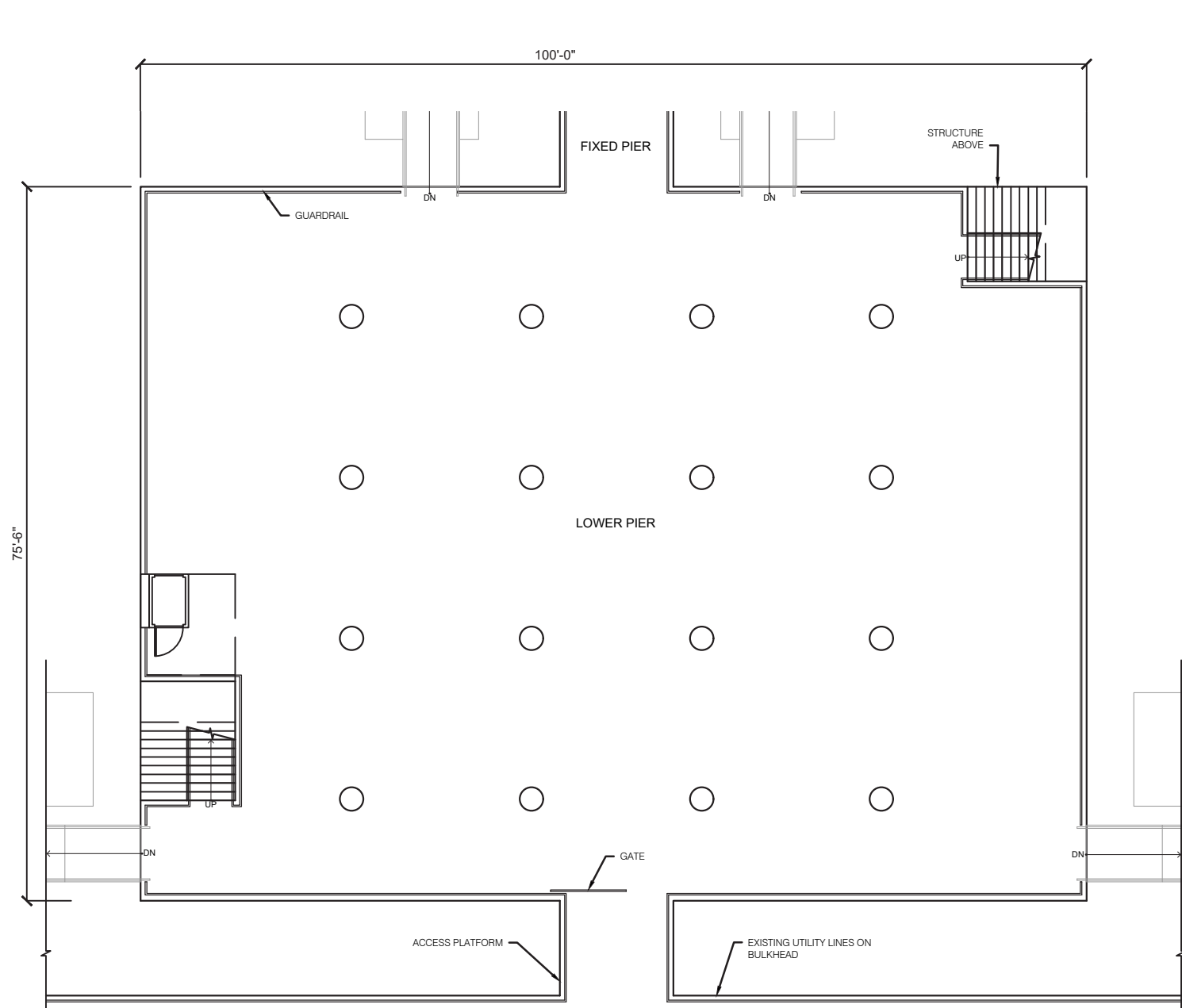


NYC Parks



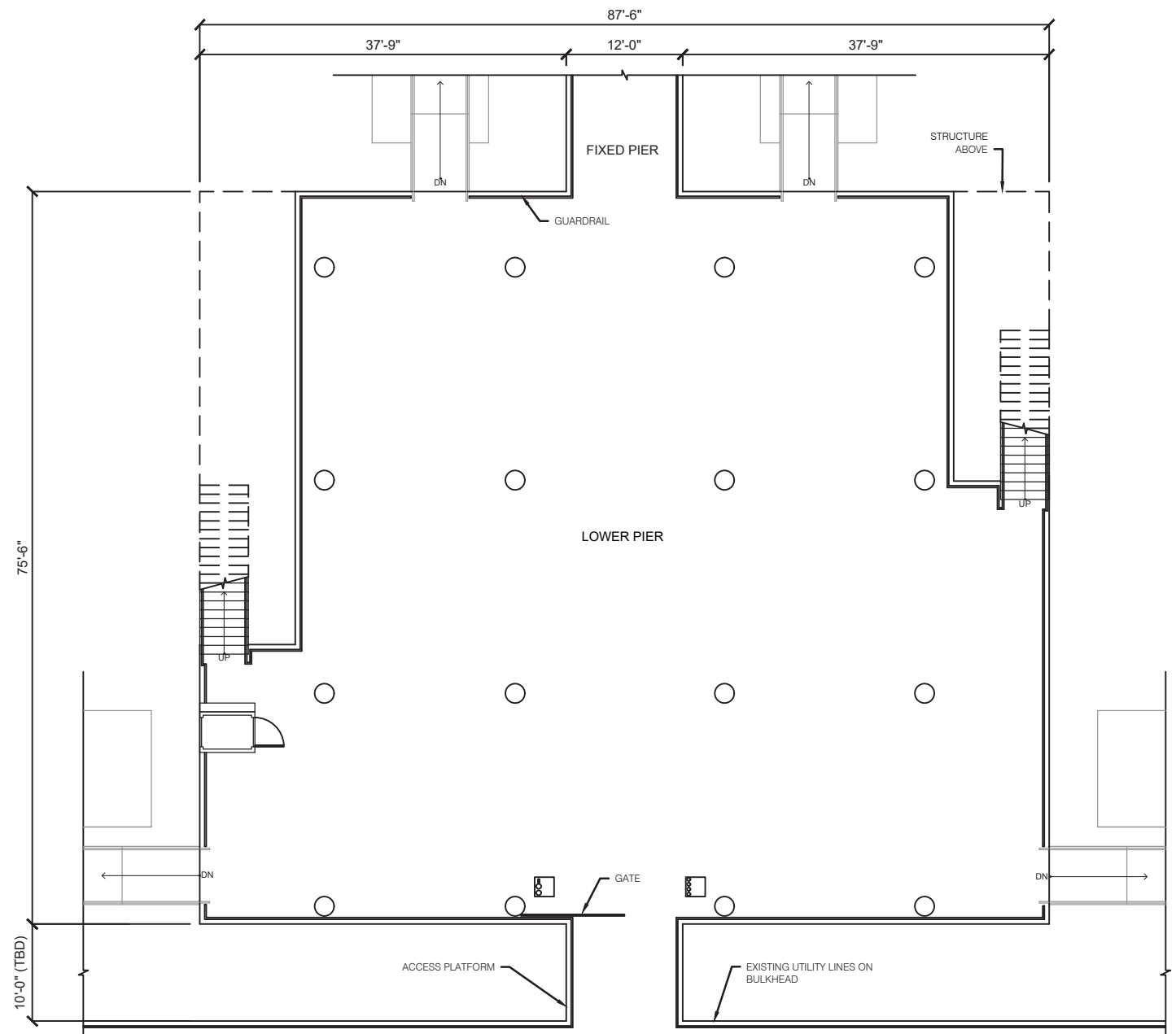
**Manhattan Community Board 7**  
**79th Street Boat Basin | Elevated Dockhouse Section**





**Conceptual PDC Approved Lower Pier Level**

**Lower Deck**  
7,550 SF



**Updated Lower Pier Level**

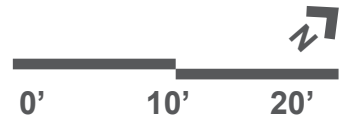
**Lower Deck**  
5,855 SF (Reduced by 1,695 SF)

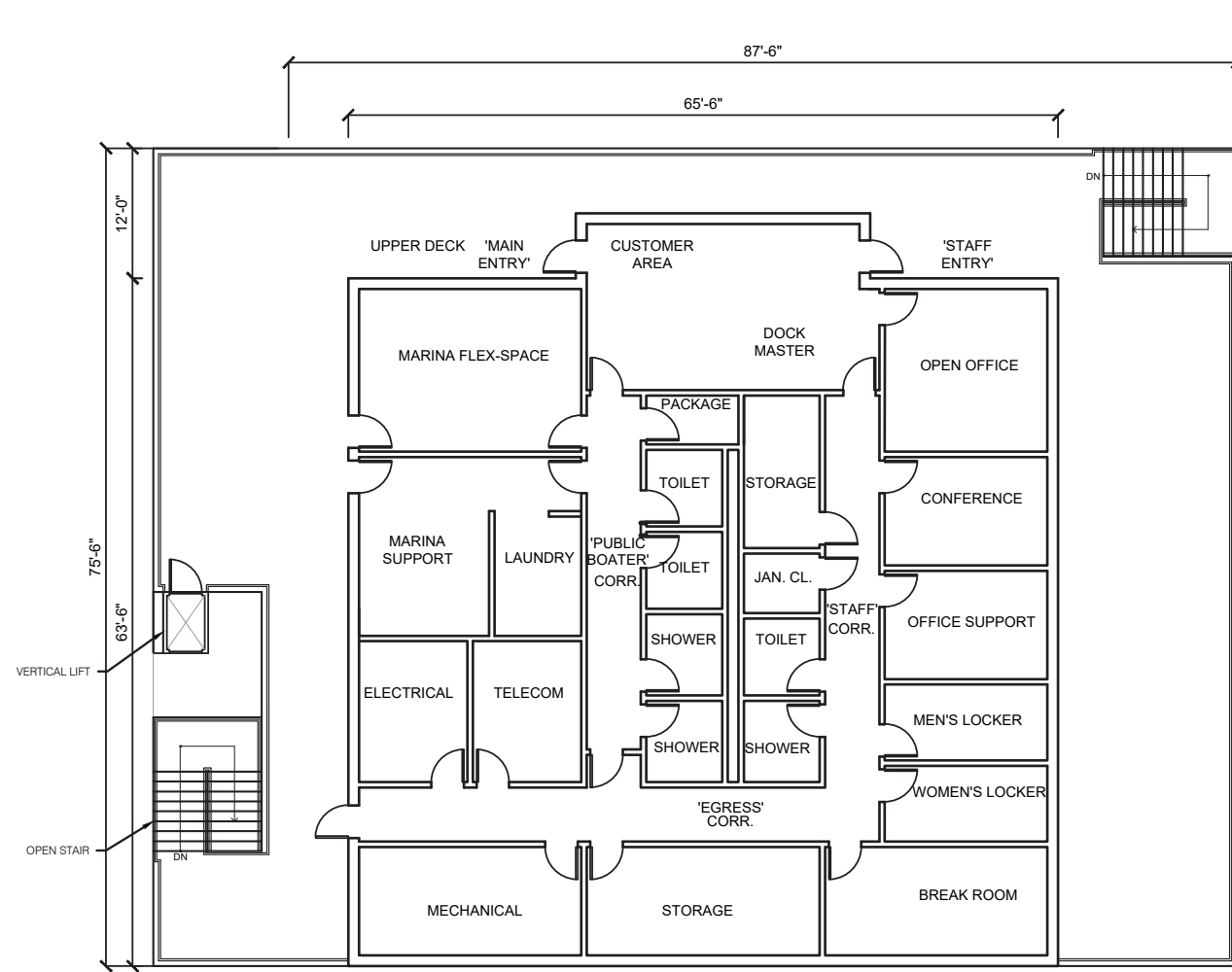


NYC Parks



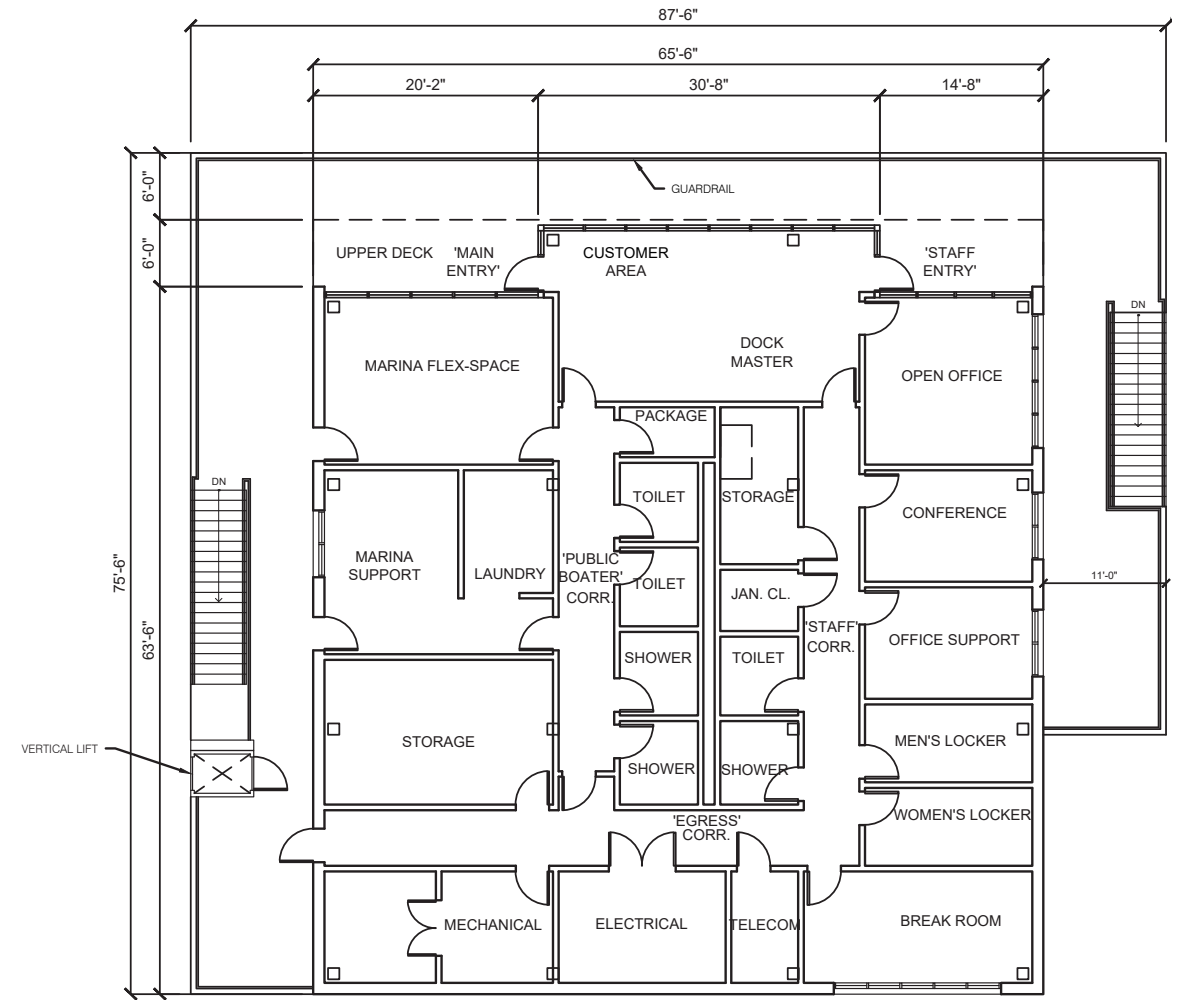
**Manhattan Community Board 7**  
**79th Street Boat Basin | Lower Pier Plan**





**Conceptual PDC Approved Elevated Dockhouse Floor Plan**

Upper Level  
 Building Area: 4,322SF  
 Outdoor Deck Area: 3,228 SF  
 Total: 7,550 SF



**Updated Elevated Dockhouse Floor Plan**

Upper Level  
 Building Area: 4,330 SF  
 Outdoor Deck Area: 2,040 SF  
 Total: 6,370 SF (Reduced by 1,180 SF)

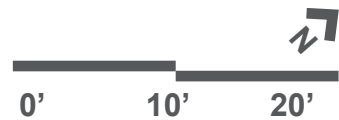


NYC Parks



**Manhattan Community Board 7**

**79th Street Boat Basin | Elevated Dockhouse Floor Plan**





NYC Parks



## Manhattan Community Board 7

79th Street Boat Basin | View looking Southwest from path North of Ballfields

Clerestory Window  
(or louvers depending  
on interior program)

Recycled Plastic Lumber  
Cladding

Metal Panel Cladding

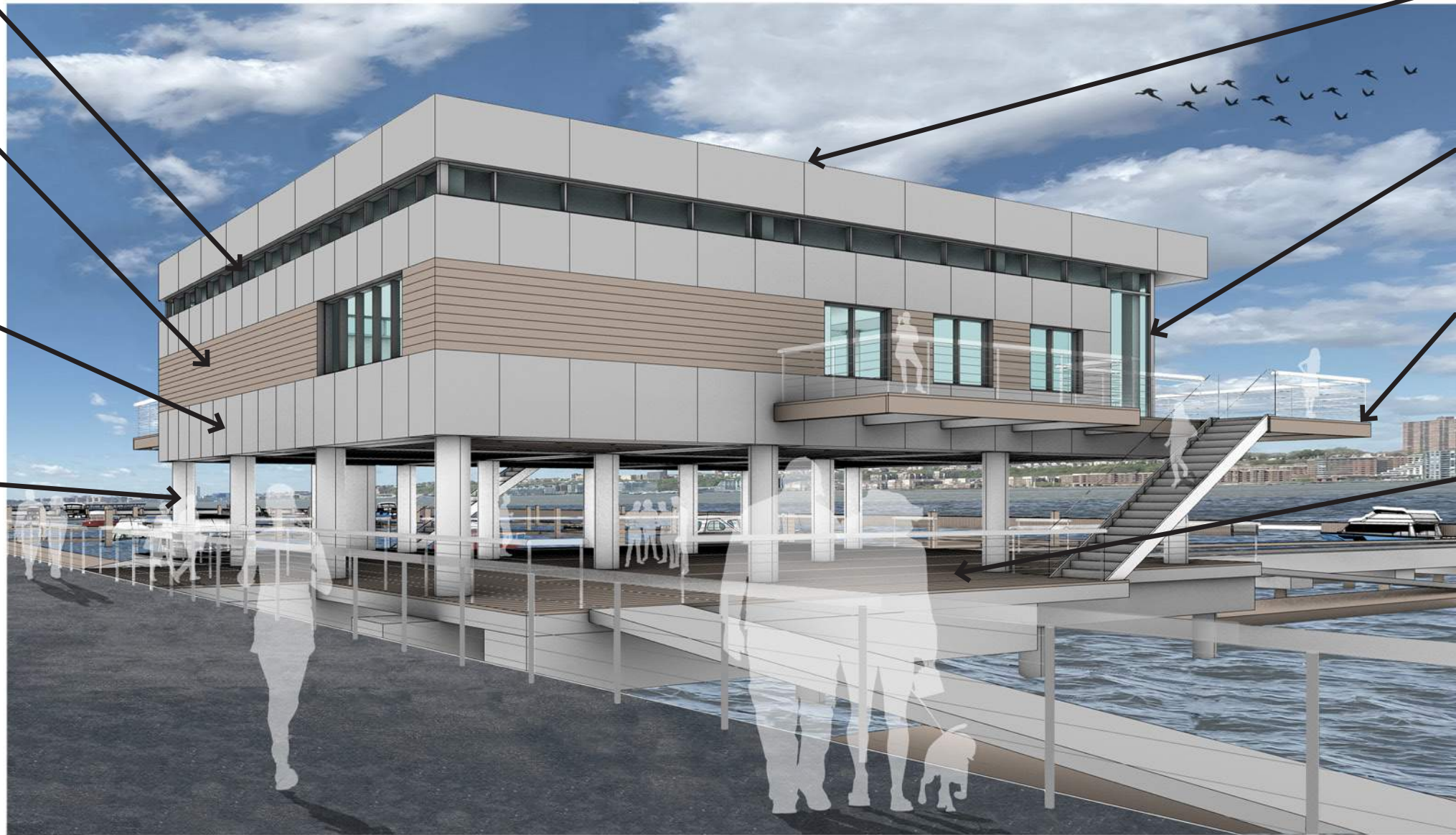
Concrete Columns

Green Roof

Storefront System

Timber Deck

Timber Deck



NYC Parks



### Manhattan Community Board 7

### 79th Street Boat Basin | Promenade View from the North





**Manhattan Community Board 7**  
**79th Street Boat Basin | Marina Entrance View from East**



**Manhattan Community Board 7**  
**79th Street Boat Basin | Marina Docks G & F View from Promenade**



NYC Parks

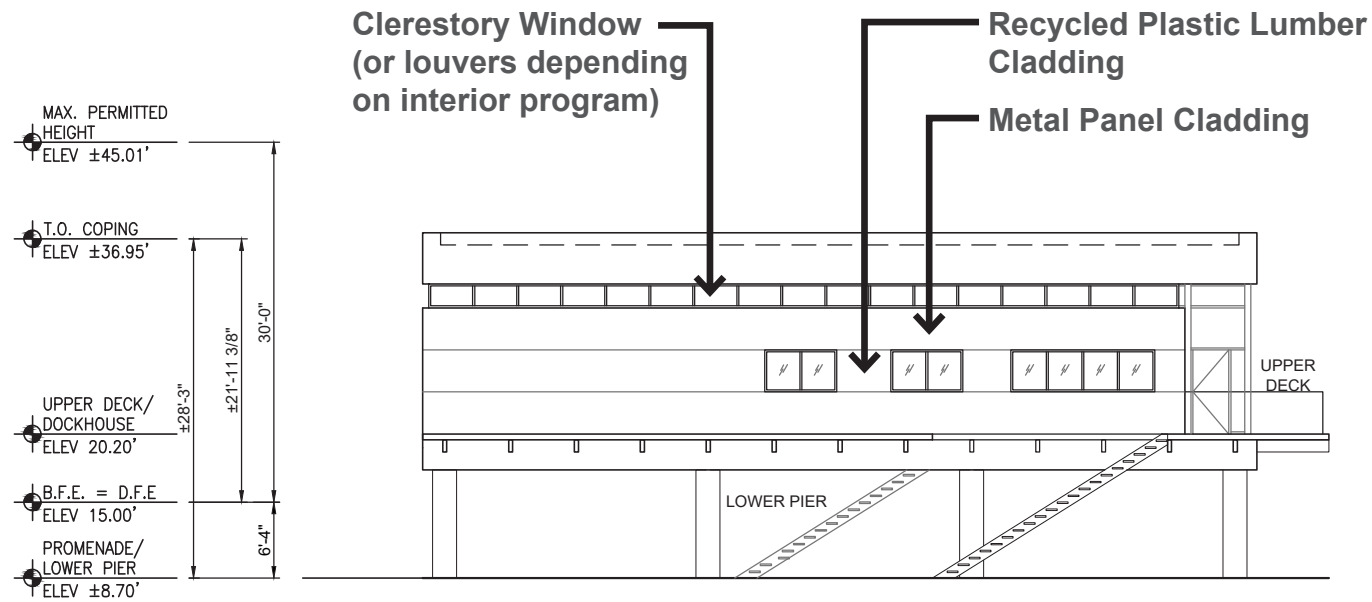


## Manhattan Community Board 7

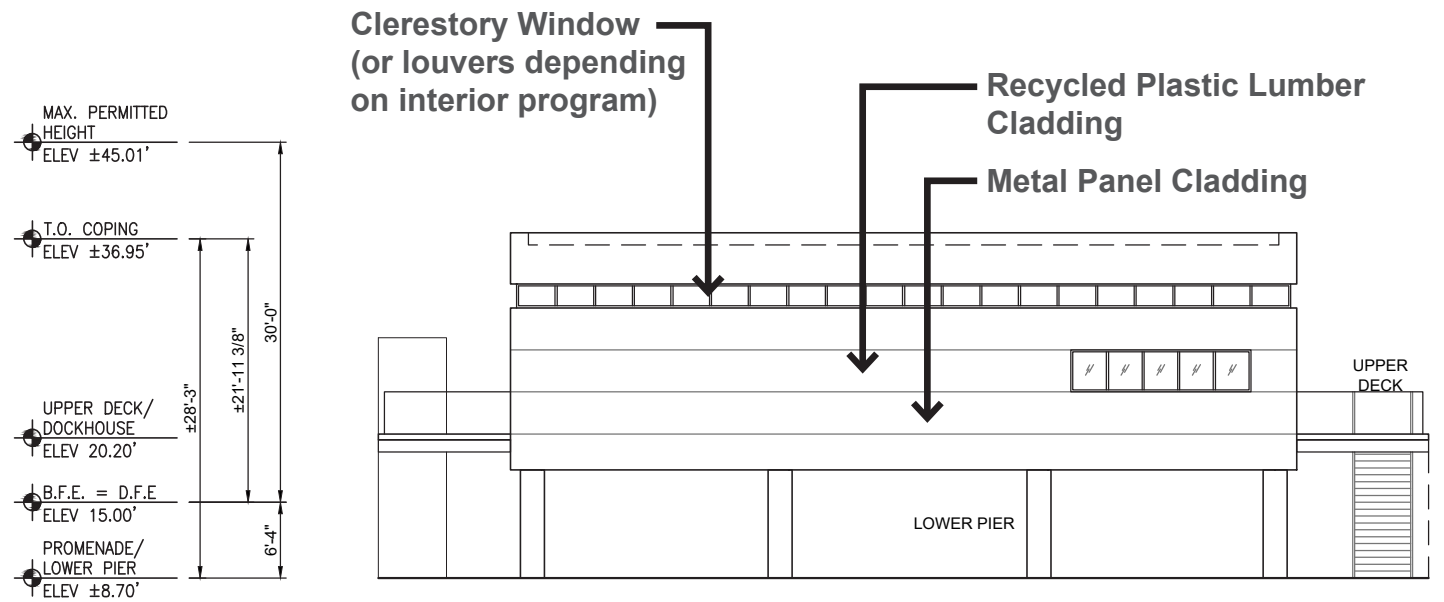
79th Street Boat Basin | View of South Wave Screen from Promenade (Includes Future Build-Out)



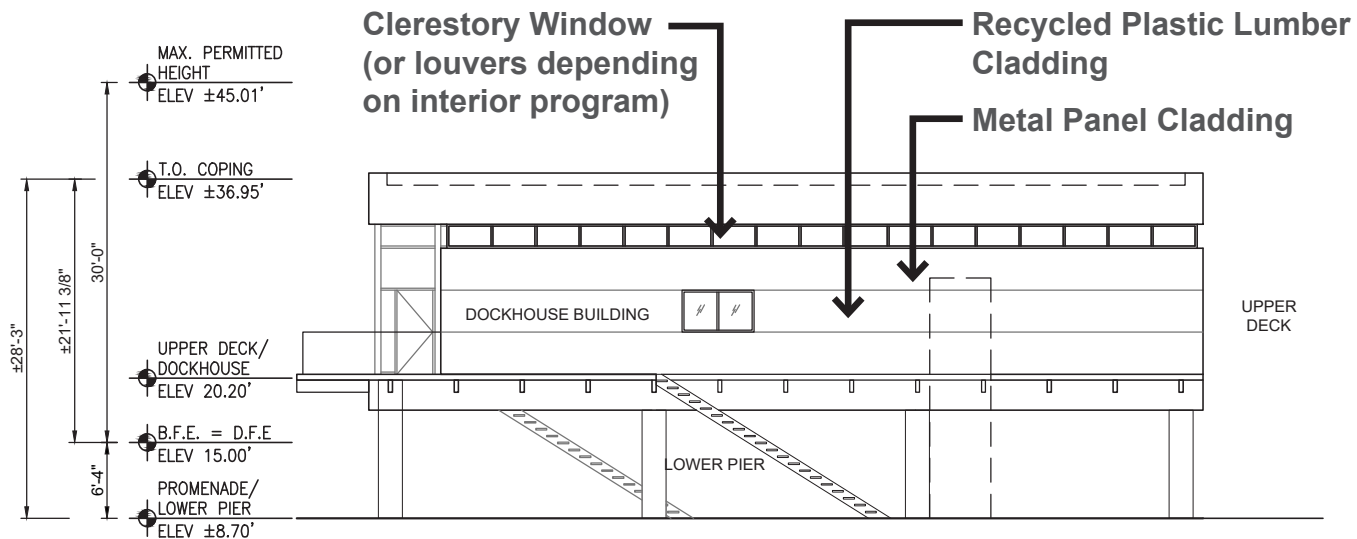
**Manhattan Community Board 7**  
**79th Street Boat Basin | View South from A-Dock**



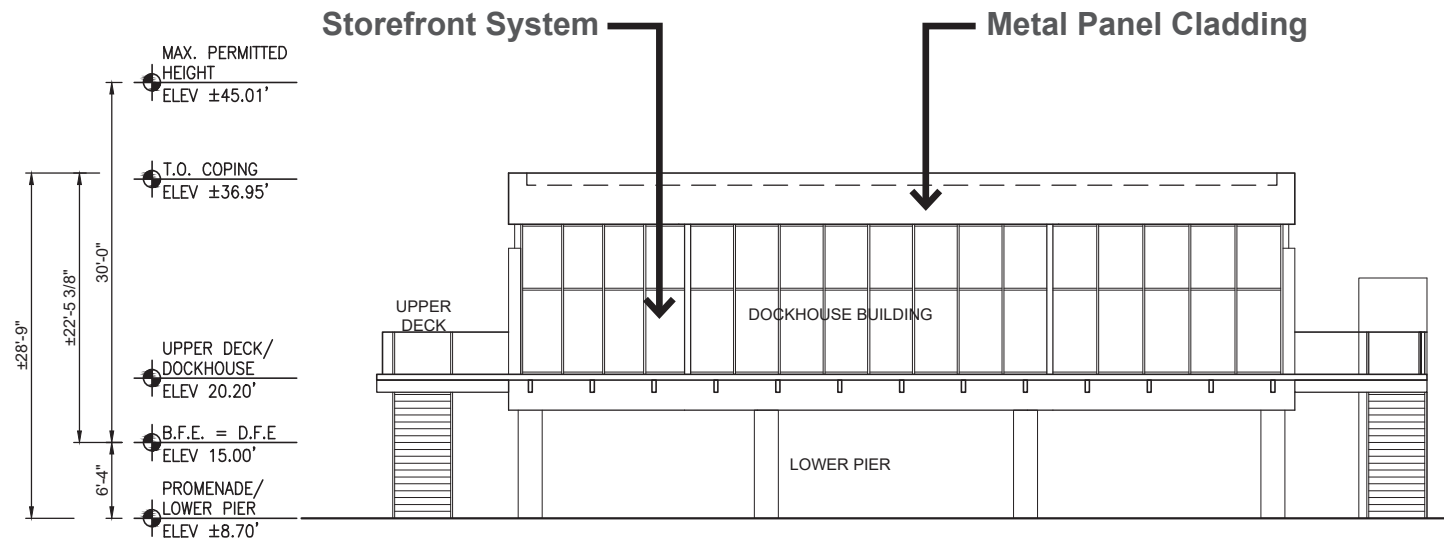
North Elevation



East Elevation



South Elevation



West Elevation

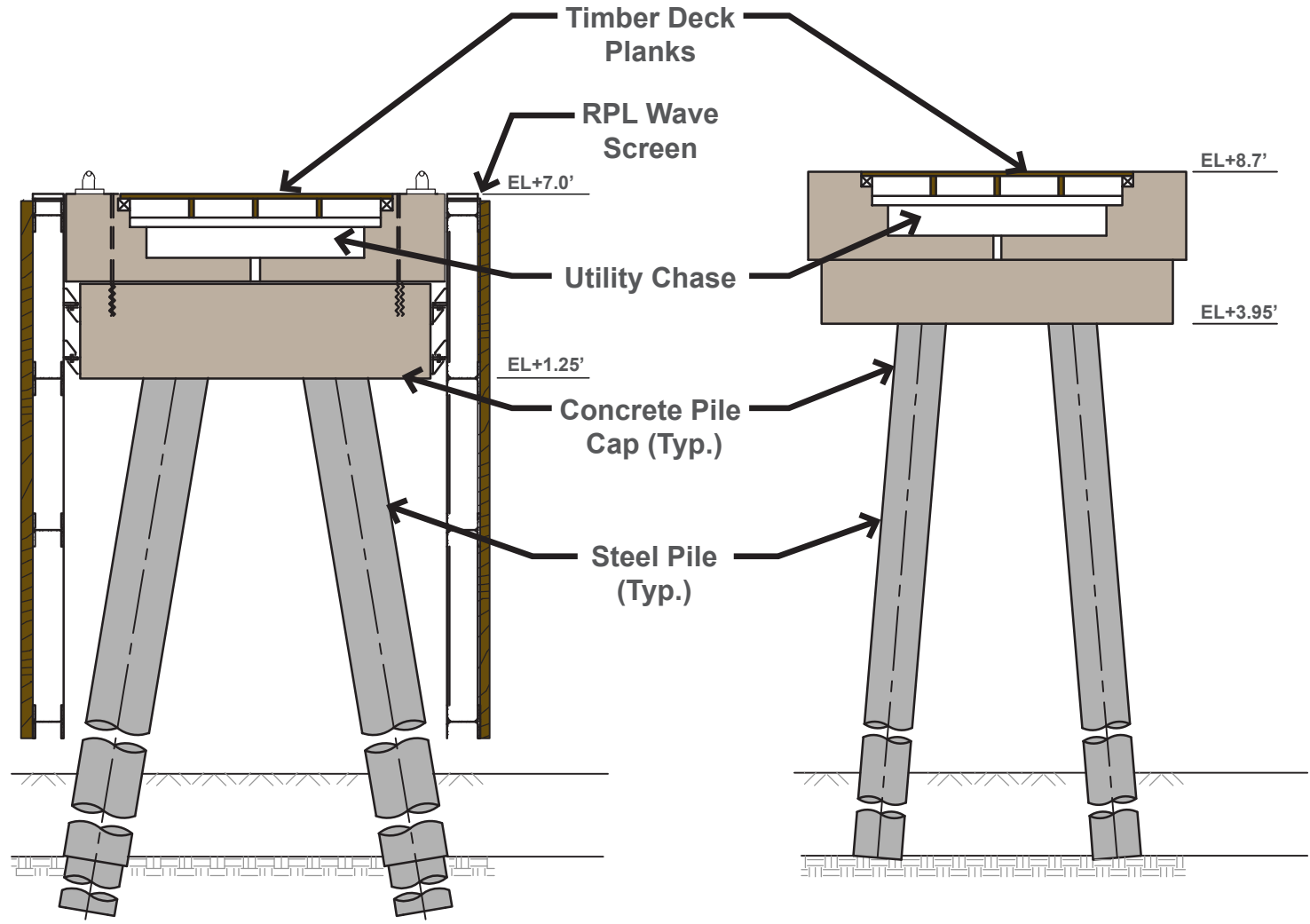


NYC Parks



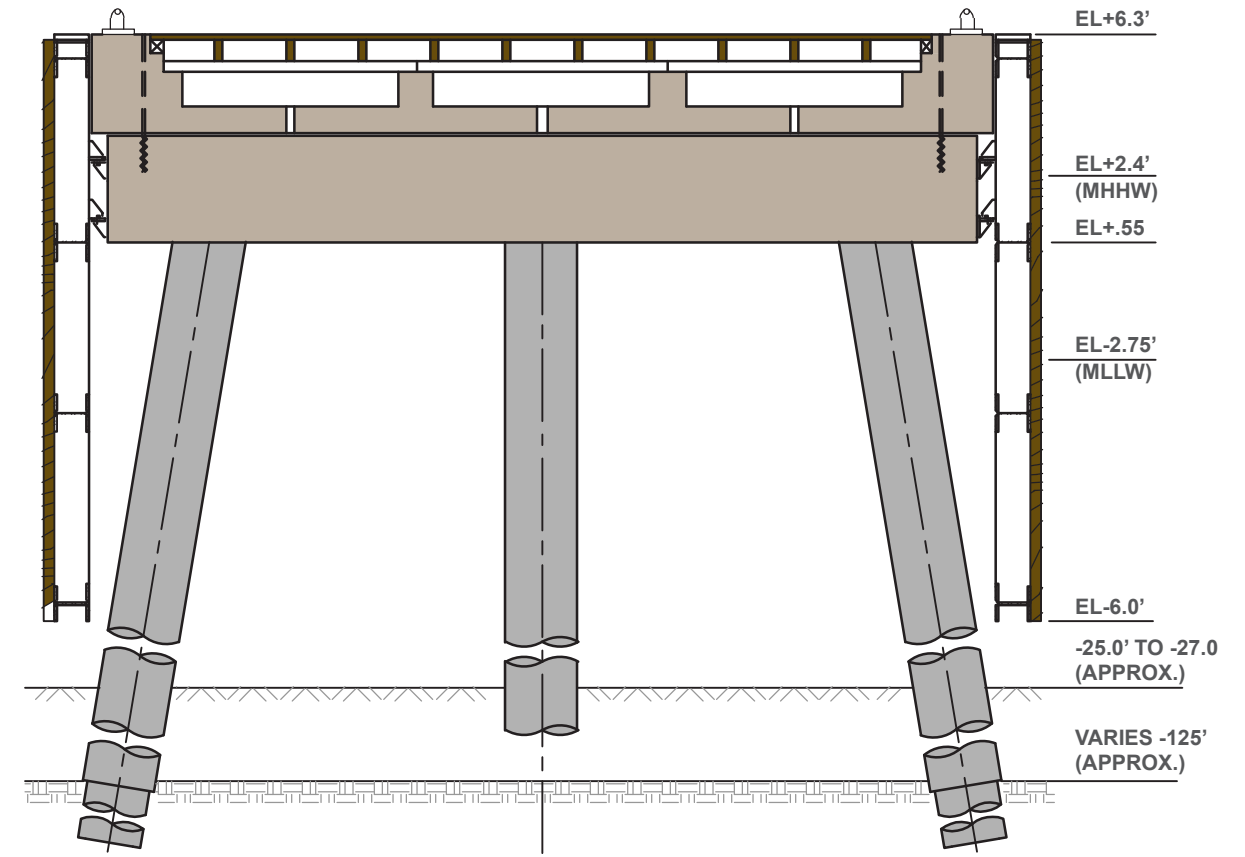
**Manhattan Community Board 7**  
**79th Street Boat Basin | Building Elevations**





West Pier Section

D Dock Pier Section



A Dock Pier Extension Section



NYC Parks



**Manhattan Community Board 7**  
**79th Street Boat Basin | Fixed Pier Sections**

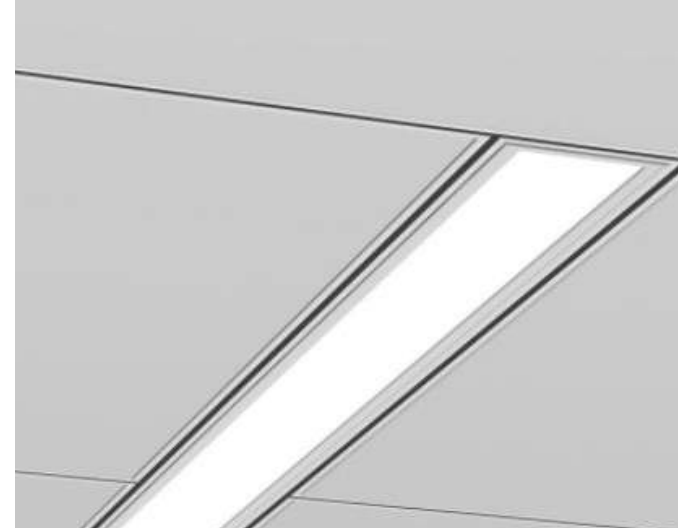




**Metal Panels**



**Recycled Plastic Lumber (RPL)**



**Recessed Linear Light Fixture**



**Green Roof**



**Storefront/Aluminum Windows**



**Louver**



**Stair**



NYC Parks

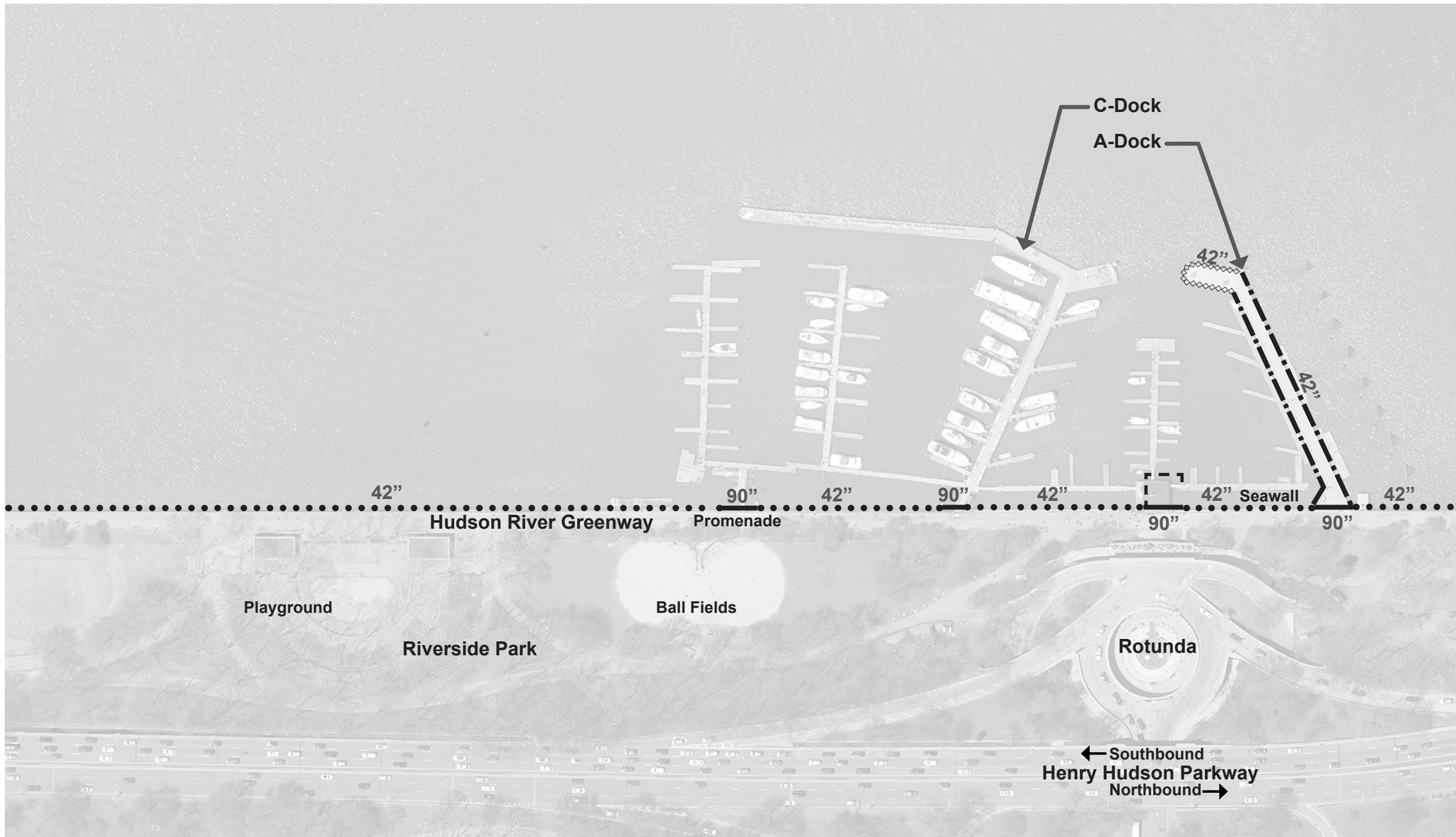


**Manhattan Community Board 7**  
**79th Street Boat Basin | Dockhouse Materials**

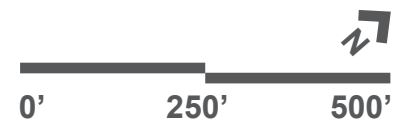
# Legend

(X = Height)

- X ••• Pipe/CLF (Promenade)
- - - X - - - Pipe (Dockhouse Deck)
- - - X - - - Pipe/Cable (A-Dock)
- ⋈ X ⋈ Pipe/Chain (A-Dock)
- - - X - - - Steel Picket Gate



## Manhattan Community Board 7 79th Street Boat Basin | Existing Searail/Gate Diagram

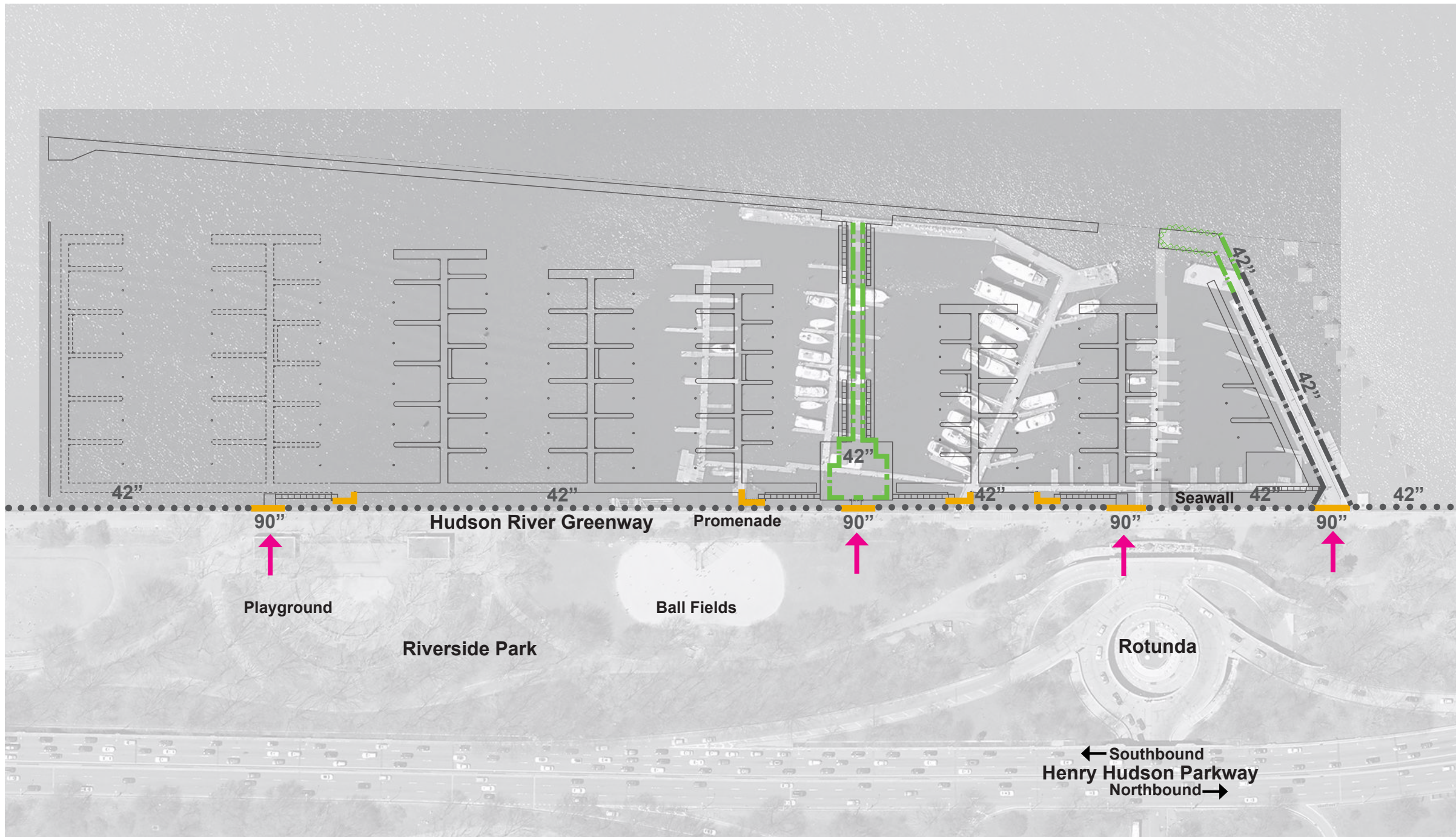




# Legend

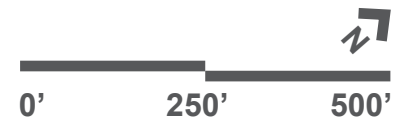
(X = Height)

- X •• Existing Pipe/CLF (Promenade)
- X - Existing Pipe/Cable (A-Dock)
- X - Pipe/Cable (A-Dock & Dockhouse)
- X Pipe/Chain (A-Dock)
- X Steel Picket Gate/Fence
- ➔ Pedestrian Entrance



NYC/EDC  
 ETHAYER ASSOCIATES  
 m&n engineering, p.c.

## Manhattan Community Board 7 79th Street Boat Basin | Proposed Searail/Gate Diagram





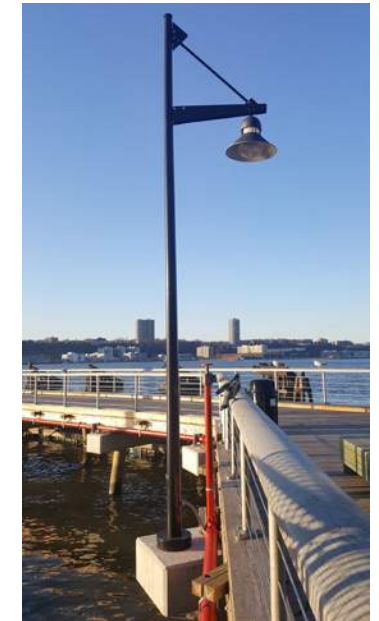
Utility/Power Pedestals



Dock Boxes



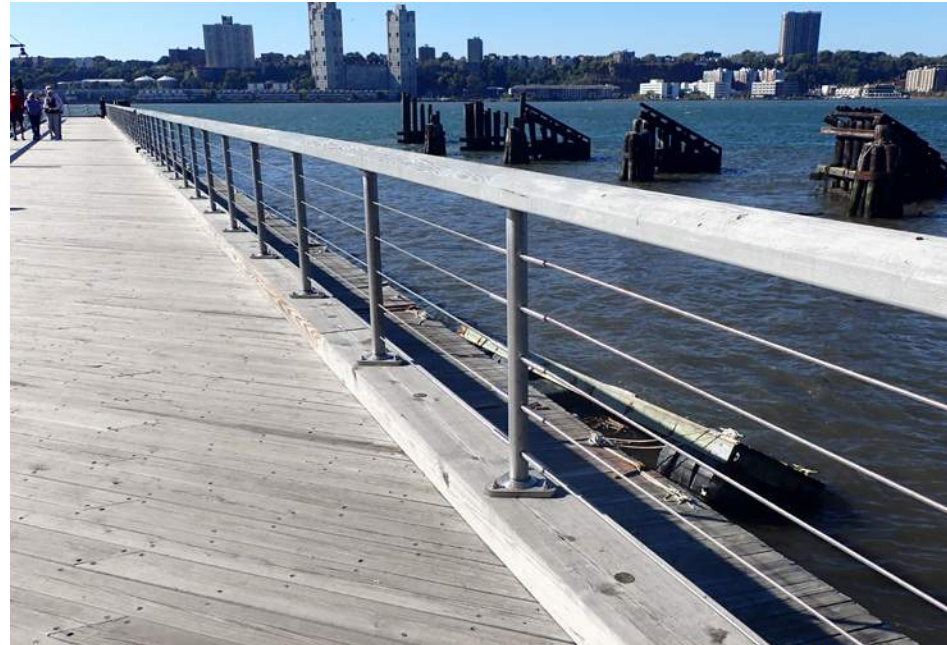
Pumpout Station



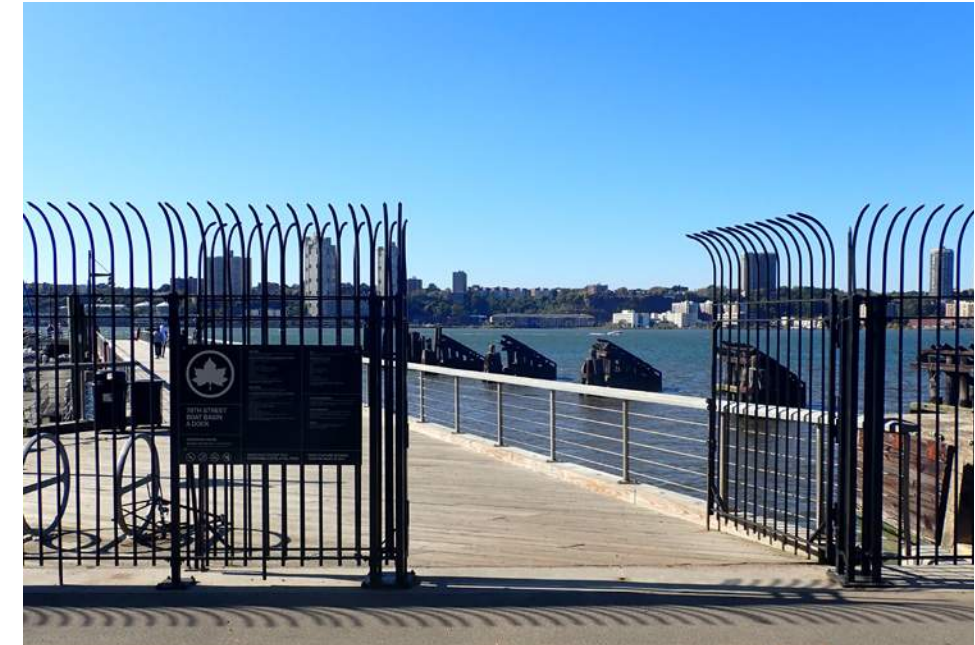
Pier Lighting



Promenade Searail



Marina Searail



Steel Picket Gate



NYC Parks

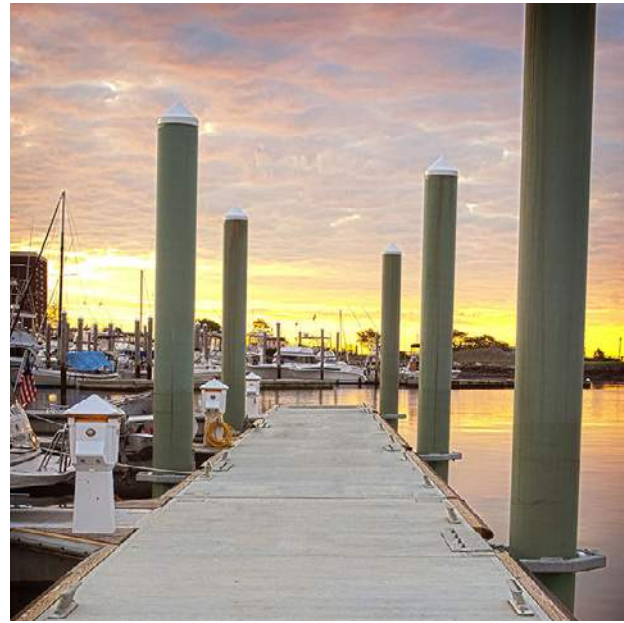


### Manhattan Community Board 7

### 79th Street Boat Basin | Proposed Searails/Gates & Site Amenities (Precedents)



**Concrete Floating Docks**



**Floating Dock Pile Guides**



**Aluminum Gangway**



**Steel Piles & Concrete Pile Caps**



**Vertical Plank Wave Screen (To be RPL Planks)**



**Timber Deck**



NYC Parks



m+n engineering, p.c.

**Manhattan Community Board 7**

**79th Street Boat Basin | Proposed Floating Docks & Fixed Pier (Precedents)**